



345wefd Bird Close, Birmingham, B12 9AW

£1,950 Per Month



As you enter the hall, relax or entertain in the fantastically designed spacious open-plan dining and living area. An L shaped kitchen is located adjacent to the living area that features a convenient separate utility room.

A W/C, storage room and central French doors to the garden perfectly finish the ground floor.

Upstairs, a family bathroom is shared by a well-proportioned single and double bedroom to the rear of the home overlooking the garden. The master bedroom, located to the front, offers an en-suite bathroom and wardrobe space.

Gym available to use from Q4 2024

Concierge, cinema room and residential lounge available to use from Q1 2025

- Open-plan dining and family area
- Ground floor W/C
- Ground floor storage
- Patio doors
- Three bedrooms
- Family bathroom
- 2 Bathroom 3 Toilet

Terrace 06, 07, 08, 11

GROUND FLOOR

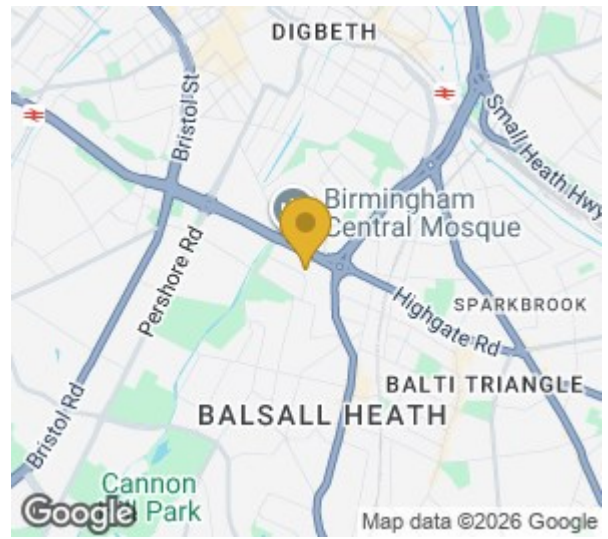
Kitchen/Diner/Living room
6.87m max x 7m max (22' 6" max x 22' 11" max)

Master Bedroom
3.95m x 2.79m (12' 11" x 9' 1")

Viewing

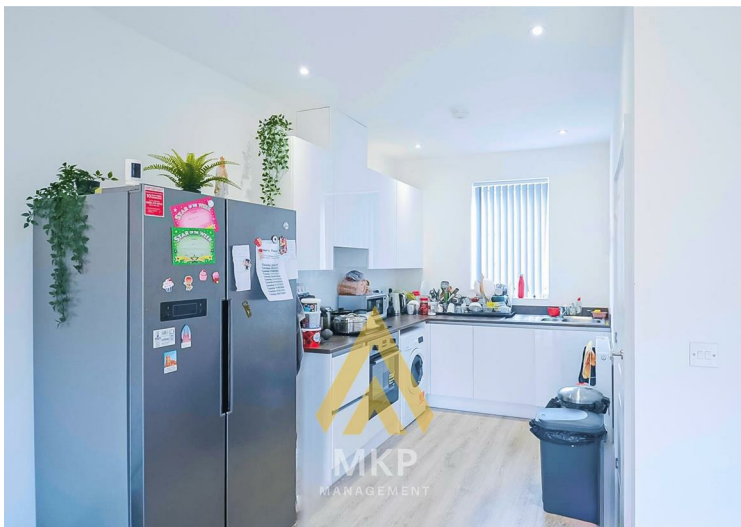
Please contact our MKP MANAGEMENT Office on 0121 472 5897 if you wish to arrange a viewing appointment for this property or require further information.





Energy Efficiency Rating	
Current	Potential
86	98
Very energy efficient - lower running costs (92 plus) A (81-91) B (69-80) C (55-68) D (39-54) E (21-38) F (1-20) G Not energy efficient - higher running costs	
England & Wales	

Environmental Impact (CO ₂) Rating	
Current	Potential
Very environmentally friendly - lower CO ₂ emissions (92 plus) A (81-91) B (69-80) C (55-68) D (39-54) E (21-38) F (1-20) G Not environmentally friendly - higher CO ₂ emissions	
England & Wales	



These particulars, whilst believed to be accurate are set out as a general outline only for guidance and do not constitute any part of an offer or contract. Intending purchasers should not rely on them as statements of representation of fact, but must satisfy themselves by inspection or otherwise as to their accuracy. No person in this firm's employment has the authority to make or give any representation or warranty in respect of the property.